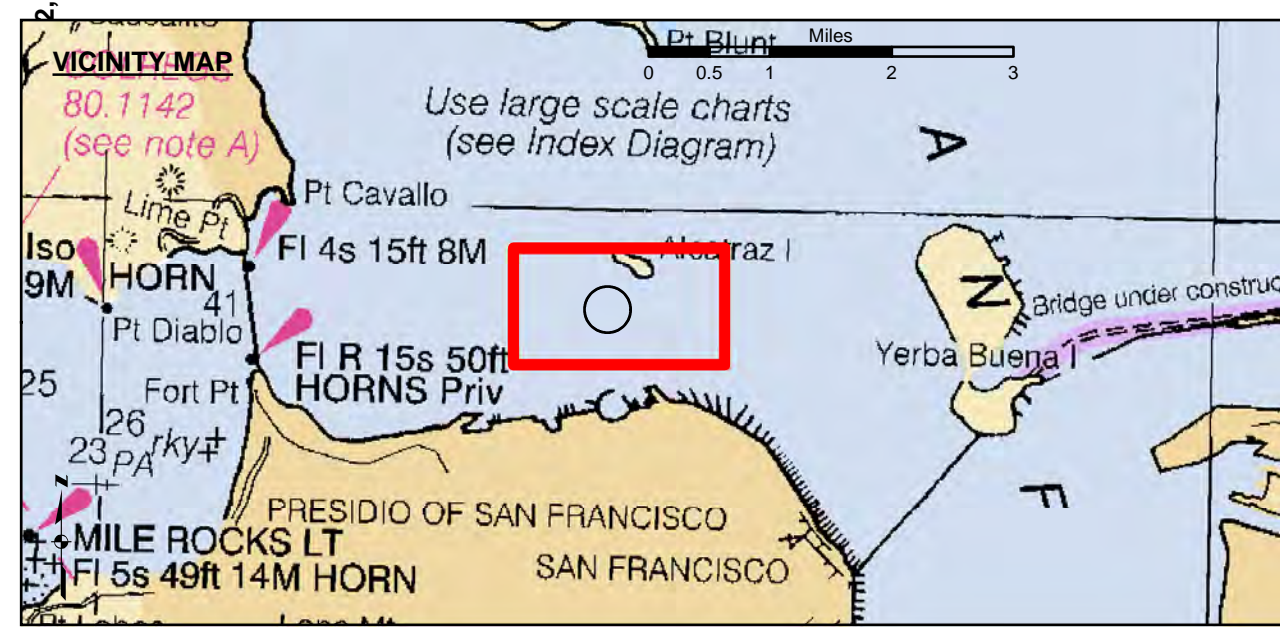
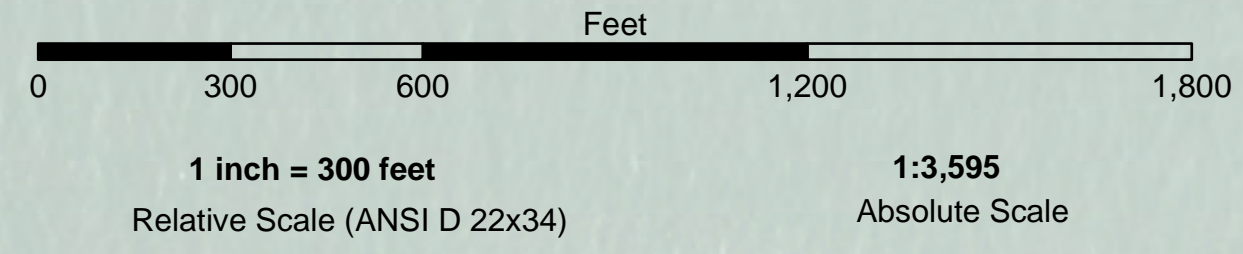


LAMBERT COORDINATES			
POINT	X	Y	
U.S.G.S. MON: 57 ELEV. - 14.00	6,005,367	2,123,290	
TRANSAMERICA BUILDING	6,011,912	2,117,566	
			+
ALCATRAZ DISPOSAL SITE - (SF-11)			
1,000 FT. RADIUS	6,005,935	2,127,235	
ALCATRAZ LIGHT	6,008,552	2,129,010	
ALCATRAZ BUOY	6,008,367	2,127,166	



- Federal Navigation Channel
- Shoaling Area
- Placement Area
- Anchorage Area
- Wreck Area
- Submerged Wreck
- Zone\_III\_Angle\_Points
- Beacon, General
- Obstruction Point
- Navigation Buoy
- Navigation Buoy
- Shoalest Sounding\*
- Contour Lines Every 10' -20' to -120'

NOTES:  
 HORIZONTAL COORDINATE SYSTEM:  
 NORTH AMERICAN DATUM OF 1983 (NAD83), PROJECTED TO THE STATE PLANE COORDINATE SYSTEM (SPCS), CALIFORNIA ZONE III. DISTANCE UNITS IN U.S. SURVEY FEET.

VERTICAL DATUM:  
 SOUNDINGS ARE SHOWN IN FEET AND INDICATE DEPTHS BELOW MEAN LOWER LOW WATER.

THE INFORMATION DEPICTED ON THIS MAP REPRESENTS THE RESULTS OF A SURVEY CONDUCTED ON THE DATE INDICATED AND CAN ONLY BE CONSIDERED TO REPRESENT THE GENERAL CONDITION EXISTING AT THAT TIME.

BASE MAPS ARE USDA NAIP 2010.

\*SHOALEST SOUNDING PER QUARTER PER REACH

DRAWING NOT TO BE USED FOR NAVIGATION. ONLY CHANNEL CONDITION AT DATE OF SURVEY. THE LOCATION OF ALL NAVIGATION AIDS ARE BASED ON INFORMATION PROVIDED BY THE U.S. COAST GUARD. BUOY LOCATIONS REPRESENT THE POSITION OF THE SINKER ONLY.

SOUNDINGS WERE TAKEN BY FATHOMETER AND ARE SHOWN TO THE NEAREST TENTH OF A FOOT. SOUNDINGS ARE BASED ON THE DATUM OF MEAN LOWER LOW WATER AT THE LOCALITY.

SURVEYED BY THE CORPS OF ENGINEERS.

THE PROJECT DEPTH IS -40 FEET AT MLLW.

PLANE GRID AND COORDINATES ARE BASED ON LAMBERT PROJECTION, NAD 83, ZONE III CALIFORNIA AS DESCRIBED IN SPECIAL PUBLICATION NO. 235, PUBLISHED BY THE NATIONAL OCEAN SURVEY.

HORIZONTAL GPS CONTROL:  
 COAST GUARD D-BEACON

VERTICAL CONTROL:  
 BENCHMARK: 180 1936  
 PID: HT0702  
 MLLW = 3.972m(13.03ft)

NOAA STATION 9414290  
 TIDE GAUGE LOCATION: SAN FRANCISCO



**DISCLAIMER**  
 The United States Government furnishes this information for your use. It is not to be used for any purpose other than that for which it was prepared, and it is not to be distributed, copied, or reproduced in any form without the express written permission of the United States Government. The user is responsible for the results of any application of the data for other than its intended purpose.

**Access Constraints:** The United States Government furnishes this information for your use. It is not to be used for any purpose other than that for which it was prepared, and it is not to be distributed, copied, or reproduced in any form without the express written permission of the United States Government. The user is responsible for the results of any application of the data for other than its intended purpose.

**Distribution Liability:** The data represents the results of data collection activities and does not constitute a warranty. Engineers activity and indicates the general existing conditions. As such, it is only valid for its intended use, content, time and accuracy specifications. The user is responsible for the results of any application of the data for other than its intended purpose.

Prepared Under the Direction of <b>TRAVIS J. RAYFIELD</b> LT COLONEL, C.E., DISTRICT ENGINEER	Chart Date: Oct 30, 2017
Submet: Hydro Survey Team Leader	Designed by: PDT
Recommended: Chief, Hydro Survey Section	Drawn by: PDT
Approved: Chief, Construction Branch	

CALIFORNIA  
**ALCATRAZ DISPOSAL SITE-SF11**  
 CONDITION SURVEY  
 26 OCTOBER 2017

**Sheet Reference Number 1 of 1**